



TreeTube™ offers the perfect tree-planting solution to harmoniously accommodate an urban space's various underground utilities by steering the tree roots through the TreeTube™ to their desired sub-surface positioning. The customizable system is delivered on-site, offering a quick, easy, durable system, tailor-made to the urban space's holistic needs.

Constructing Urban Forests

Fully-Customizable Plug & Play Solution

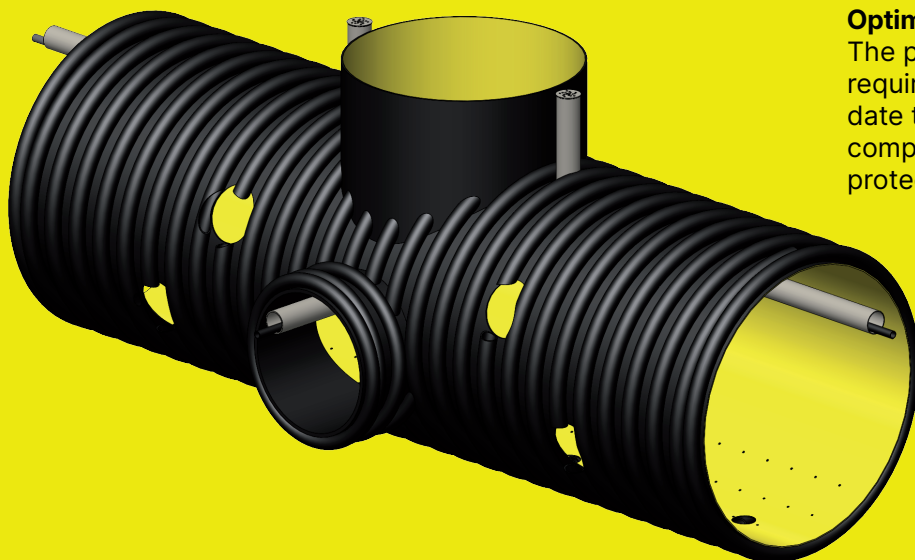
Patented TreeTube™ systems offer a unique, modular plug-and-play solution, to accommodate for any belowground challenge.

TreeTube™: Quick & Easy Installation

A complete system is delivered on-site for same-day, end-to-end installation.

Optimal Design

The product's circular design guarantees the required strength and durability to accommodate tree roots and allow them to coexist in complex underground infrastructures, while protecting neighboring utilities.





Aeration & Irrigation System

Root Director
Tree-planting opening

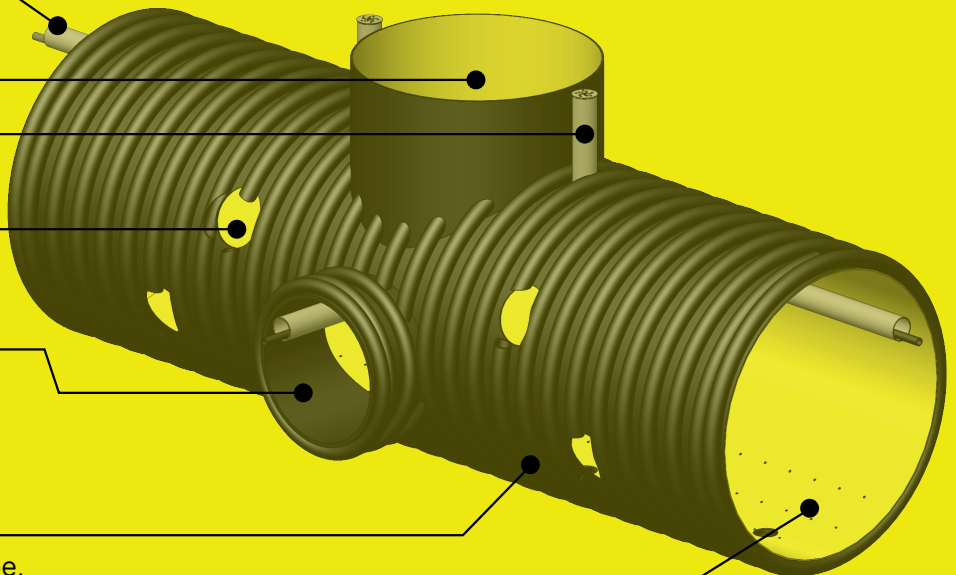
Aeration Inlet

Porthole
Root penetration porthole

Perpendicular Rooting Tube
Specially designed to encourage roots to grow perpendicular to the planting ditch

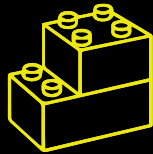
TreeTube™ Body
Load-bearing corrugated HDPE pipe, containing the tree's soil volume

Root Barrier



For more information regarding urban tree planting, please check out our website: www.krah-pipes.ee

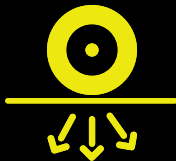
TreeTube™ Benefits



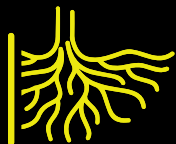
Modular Fully-Customizable System



Increased Soil Aeration



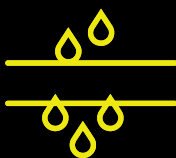
Heavy - Traffic Load Support



Root-Damage Utility Protection



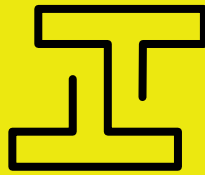
Urban Infrastructure Integration



Stormwater Management



Substantial Soil Volume for Healthy Rooting



TreeTube™

Urban Green Infrastructure

Maximal Load-Bearing Capacity

The tubular shape is the best solution to accommodate heavy traffic loads adjacent to the road.



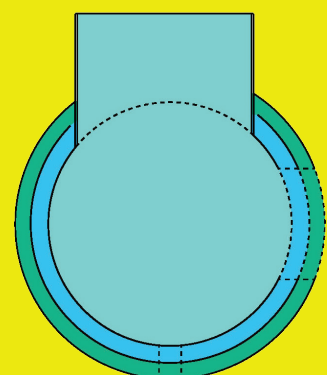
Quick, Easy & Ready-to-Install

TreeTube™ is delivered to your site as a complete, ready-to-install system. Just excavate, place the system, and cover.



Adaptable Modular System

TreeTube™ systems come in a variety of models, dimensions and combinations to accommodate your site's unique needs.



A Perfect Fit for Every Application

Integrated Aeration & Irrigation

All systems are delivered with aeration and/or irrigation systems, prefab assembled & installed upon request.

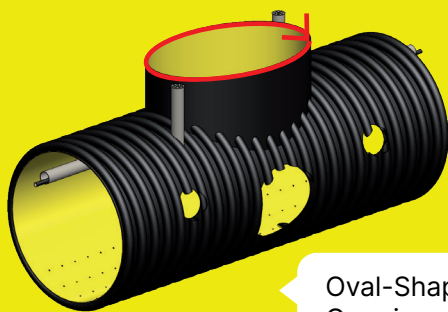
Optimal Drainage

The bottom of the system is fully perforated, enabling controlled drainage into the soil.

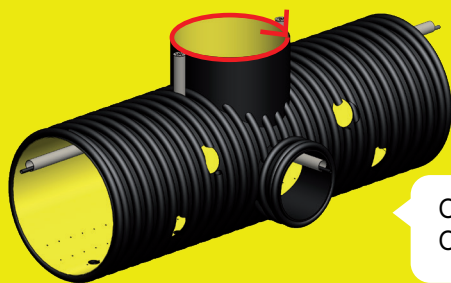
Friendly Maintenance

Ability to easily apply maintenance on adjacent street utilities, including urban tree utilities, without collision or damage.

Adaptable Root Director

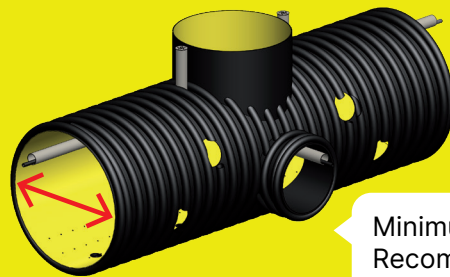


Oval-Shaped Opening

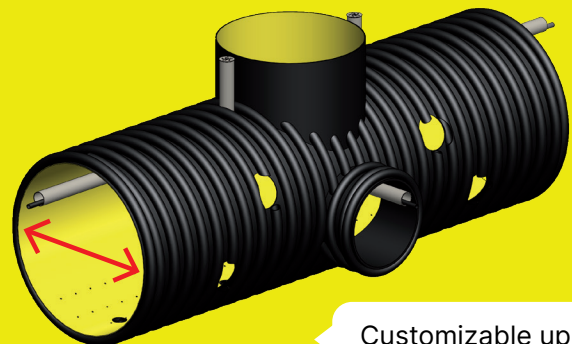


Circle-Shaped Opening

Adaptable TreeTube™ Body

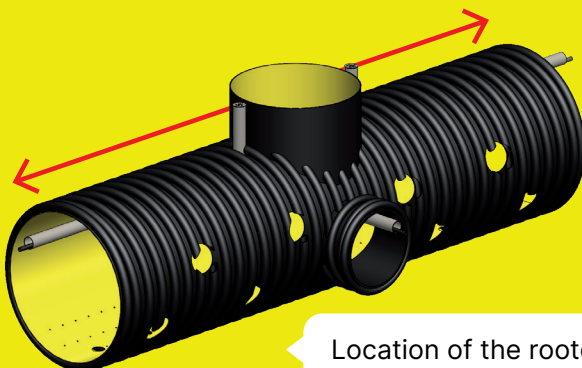


Minimum Recommended - 1000mm Ø



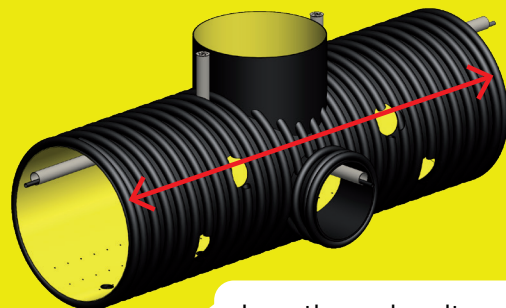
Customizable up to 3000mm Ø

Adaptable Direction



Location of the rootdirector on top of the TreeTube™ body

Adaptable Length



Length can be altered and adjusted on-demand

Quick & Easy Installation



1. Digging a Trench

Subbase preparation in accordance with local requirements



2. Positioning the System

The lightweight TreeTube™ can be positioned with almost every excavator



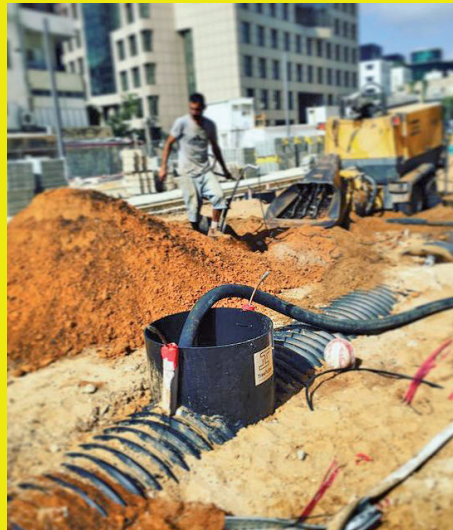
3. Height Control

Before back-filling the TreeTube™, the installation height must be analyzed & approved



4. Tube Stabilization

TreeTube™ can be back-filled according to local requirements, directly following the installation, allowing quick resumption of roadworks



5. Soilmix Filling

The TreeTube™ can be hand-filled or pump-filled with soil

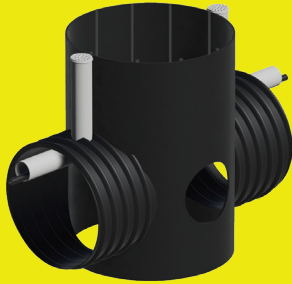


6. Installation Complete!

Trees can now easily grow in urban spaces without affecting adjacent underground utilities

Green Utility Accessories

Constructive Root Director



Specially engineered to reinforce the surrounding tree pit and prevent the curbstones and pavement from surging. The modular system reinforces the planting pit and facilitates tree-growth in harsh urban environments.

Material: HDPE
Material Thickness: 6-8 mm
Diameter: 600-1500 mm
Height: 600-1200 mm

Root Guidance Panel



Designed to block roots from penetrating and growing through.

Material: HDPE
Material Thickness: 6-8 mm
Height (Upon Request): 300-2000 mm
Length: Upon request

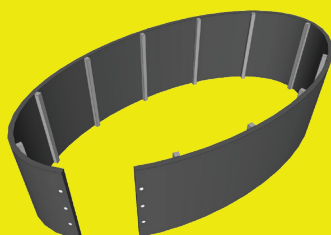
Round Root Guide



Designed to direct the tree roots in the desired direction, while preventing curbstone and utility damage.

Material: HDPE
Material Thickness: 6-8 mm
Diameter: 600-1500 mm
Height: 600-300 mm

Adjustable Root Director

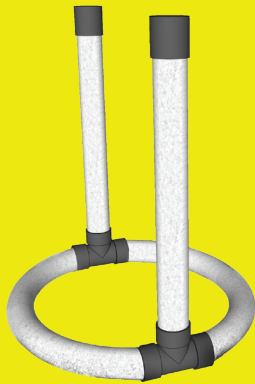


Designed to direct the tree roots in the desired direction, while preventing curbstone and utility damage.

Material: HDPE
Material Thickness: 6-8 mm
Dimensions: Adjustable according to the tree pit
Height: 300-600 mm

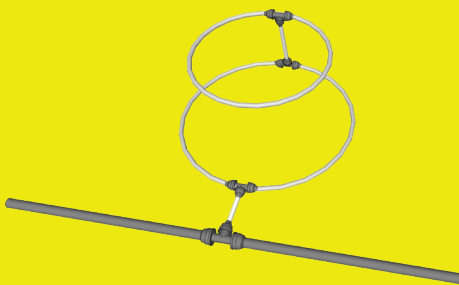
Green Utility Accessories

Tree Aeration



The perforated tube's structure is uniquely engineered to provide improved soil aeration and enable maximal subsurface root ventilation. To ensure long-term function, the system is coated with geotextile. Adjustable sizes upon request.

Sub-Surface Irrigation



The system enables a unique below-surface, adjustable, even waterflow distribution through the insertion of a customizable drip-irrigation pipe into the system, which can be adapted according to the tree pit's dimensions. The irrigation system's sub-surface positioning protects the mechanism from vandalism.

Adjustable Diameter: According to tree pit dimensions, suitable for 16-20mm drip irrigation pipes

Tree Support System



Weather resistant, durable & reusable mechanism to guide and support young trees.

Material: Composite
Color: Adjustable
Dimensions: Adjustable
Stake Diameter: 31 mm

TreeTube™

Urban Green Infrastructure

Urban trees are a simple solution to some of the world's most complicated problems. TreeTube™ develops a unique line of products that solve acute challenges pertaining to urban green utility infrastructure. With a multidisciplinary team of experts, we are industrializing urban greening by providing quick, easy to-install, cost-effective & modular solutions that answer to these load-bearing challenges.



Let us show you how trees can be at the root of your infrastructure, for a healthy, sustainable, holistic urban greenscape.